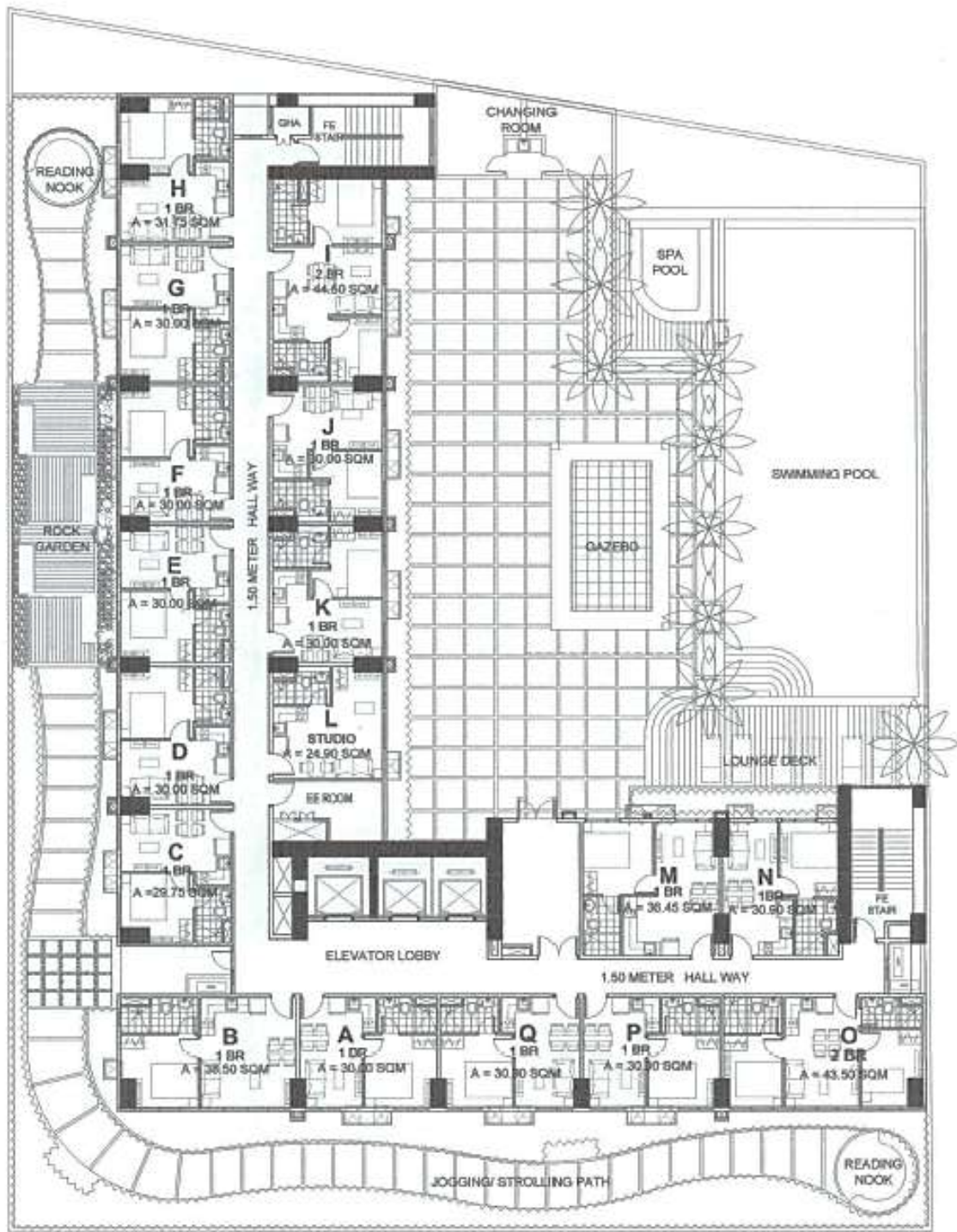


E:\UTDRESIDENCES PROJECTS\AZALEA\MARKETING COLLATERAL\ISSUE DATE JAN 1, 2015\AZALEA PLACE CEBU\KEYPLAN_ISSUE DATE JANUARY 1, 2015.dwg



SECOND FLOOR PLAN



While every care has been taken in preparing this material, all plans, details and specifications contained herein are subject to change without prior notice and do not constitute part of any offer or contract. No warranty or representation is made by the Developer as to their accuracy. Furthermore, the Developer reserves the right to alter, deviate or dispense with the plans and specifications referred to herein to comply with certain building requirements such as but not limited to structural, mechanical, electrical, sanitary and plumbing requirements. In the event of alteration or deviation with the plans and specifications referred to herein, the Developer shall be rendered free and harmless from any liability arising therefrom. Furniture, appliances and equipment indicated herein are for illustrative purpose only and are not included in the deliverables.

Some views may currently be unobstructed. However, the Developer does not guarantee unobstructed views due to possible future developments in the neighboring lots.

All drawings are not to scale.

ROBINSONS LAND CORPORATION
 DATE ISSUED: JANUARY 1, 2015
 This supersedes AUGUST 18, 2011 keyplan.

Mountain View



Amenity View

Gorordo Avenue

TYPICAL FLOOR LAYOUT 1

@ 3rd, 5th, 7th, 9th, 11th, 14th, 16th, 18th, 20th, 22nd, 24th, 26th



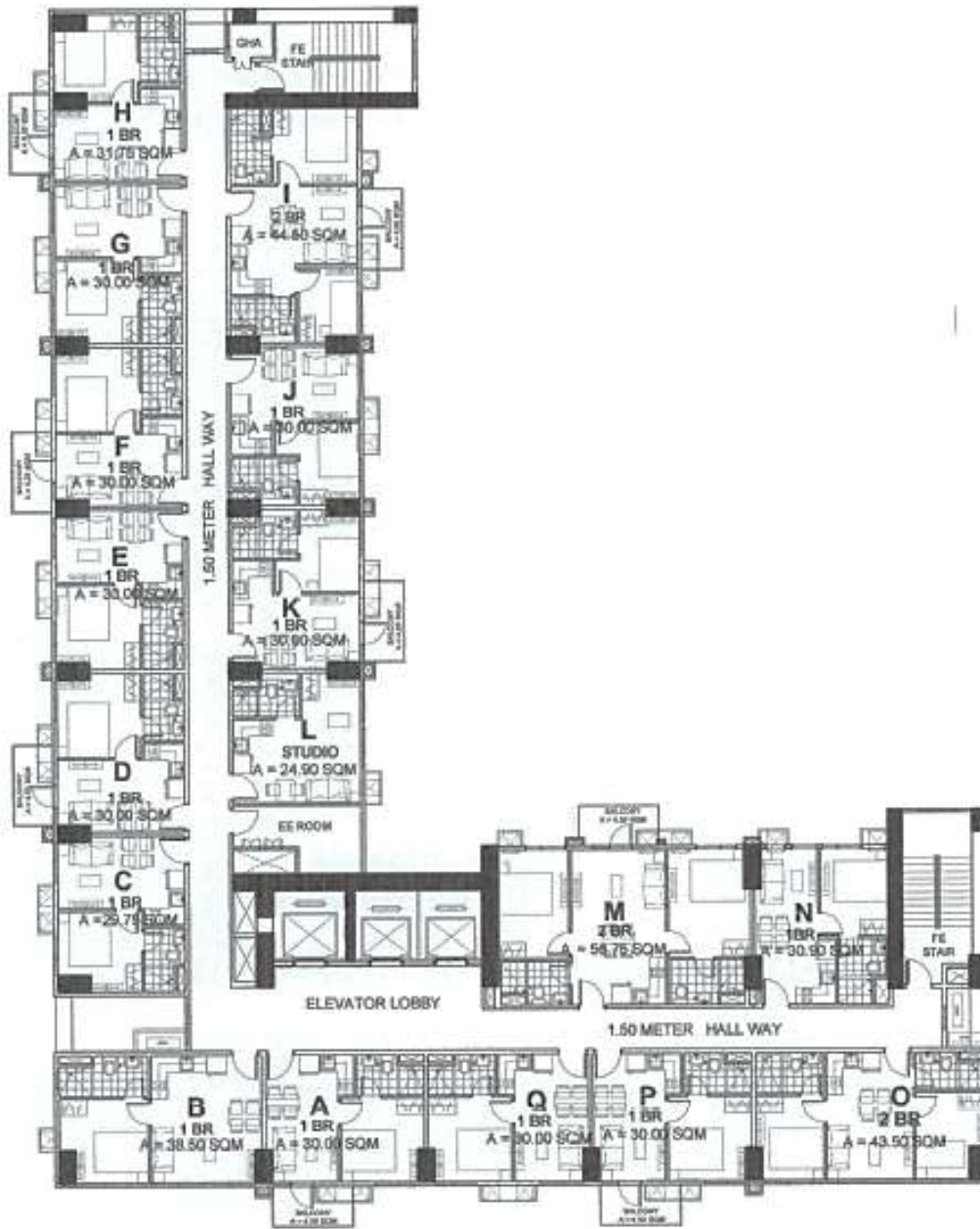
While every care has been taken in preparing this material, all plans, details and specifications contained herein are subject to change without prior notice and do not constitute part of any offer or contract. No warranty or representation is made by the Developer as to their accuracy. Furthermore, the Developer reserves the right to alter, deviate or dispense with the plans and specifications referred to herein to comply with certain building requirements such as but not limited to structural, mechanical, electrical, sanitary and plumbing requirements. In the event of alteration or deviation with the plans and specifications referred to herein, the Developer shall be rendered free and harmless from any liability arising therefrom. Furniture, appliances and equipment indicated herein are for illustrative purpose only and are not included in the deliverables.

Some views may currently be unobstructed. However, the Developer does not guarantee unobstructed views due to possible future developments in the neighboring lots.

All drawings are not to scale.

ROBINSONS LAND CORPORATION
 DATE ISSUED: JANUARY 1, 2015
 This supercedes AUGUST 18, 2011 keyplan.

Mountain View



Amenity View

Gorordo Avenue



TYPICAL FLOOR LAYOUT 2

@ 4th, 6th, 8th, 10th, 12th, 15th, 17th, 19th, 21st, 23rd, 25th

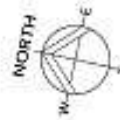


While every care has been taken in preparing this material, all plans, details and specifications contained herein are subject to change without prior notice and do not constitute part of any offer or contract. No warranty or representation is made by the Developer as to their accuracy. Furthermore, the Developer reserves the right to alter, deviate or dispense with the plans and specifications referred to herein to comply with certain building requirements such as but not limited to structural, mechanical, electrical, sanitary and plumbing requirements. In the event of alteration or deviation with the plans and specifications referred to herein, the Developer shall be rendered free and harmless from any liability arising therefrom. Furniture, appliances and equipment indicated herein are for illustrative purpose only and are not included in the deliverables.

Some views may currently be unobstructed. However, the Developer does not guarantee unobstructed views due to possible future developments in the neighboring lots.
All drawings are not to scale.

ROBINSONS LAND CORPORATION
 DATE ISSUED: JANUARY 1, 2015
 This supercode: AUGUST 18, 2011 *eyplan.*

GROUND FLOOR PLAN



A project of
ROBINSON'S RESIDENCES

